



INTI
International College Penang

FINAL
Examination Paper

(COVER PAGE)

Session : August 2018

Programme : Diploma in Electrical and Electronic Engineering (DEEI)

Course : **EGR1185: Engineering Drawing**

Date of Examination : 12 December 2018 (Wednesday)

Time : 11:00am – 1:00pm Reading Time : Nil

Duration : 2 Hours

Special Instructions :

This paper consists of six (6) questions. Answer **any FOUR (4) questions** in the drawing paper provided.

All questions carry equal marks. All drawings are to be drawn in full size unless otherwise stated.

All dimensions are not required unless the question explicitly asks for them.

Materials permitted :

Drawing Instruments and Calculator

Materials provided :

A2 Sized Drawing Paper

Examiner(s) : **Phua Chin Lai**

Moderator : Dr. Ooi Beng Lee

This paper consists of 7 printed pages, including the cover page.

INTI INTERNATIONAL COLLEGE PENANG

DIPLOMA IN ELECTRICAL AND ELECTRONIC ENGINEERING PROGRAMME (DEEI)
 EGR 1185: ENGINEERING DRAWING
 FINAL EXAMINATION: AUGUST 2018 SESSION

Instructions: This paper consists of Six (6) questions. Answer any FOUR (4) questions in the drawing paper provided. All questions carry equal marks. All drawings are to be drawn in full size unless otherwise stated. All dimensions are not required unless the question explicitly asks for them.

NOTE: All dimensions are given in mm.

Question 1

Using principles of tangency, draw Figure Q1, making sure that the construction to obtain the centers of the arcs and circles are properly indicated.

(25 marks)

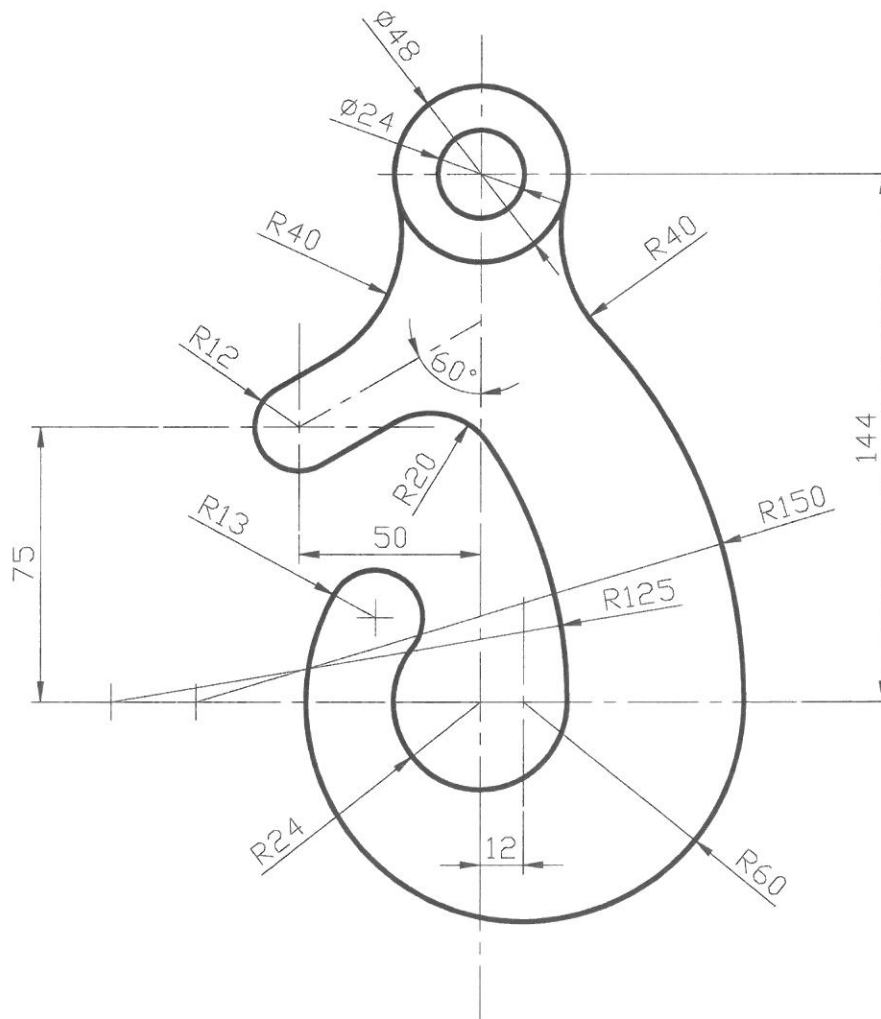


Figure Q1

Question 2

Top and front views in Figure Q2 are presented in 3rd angle projection. Draw the following views in third-angle projection with scale 1:1;

- a) a front view
- b) a right side view
- c) a top view

(25 marks)

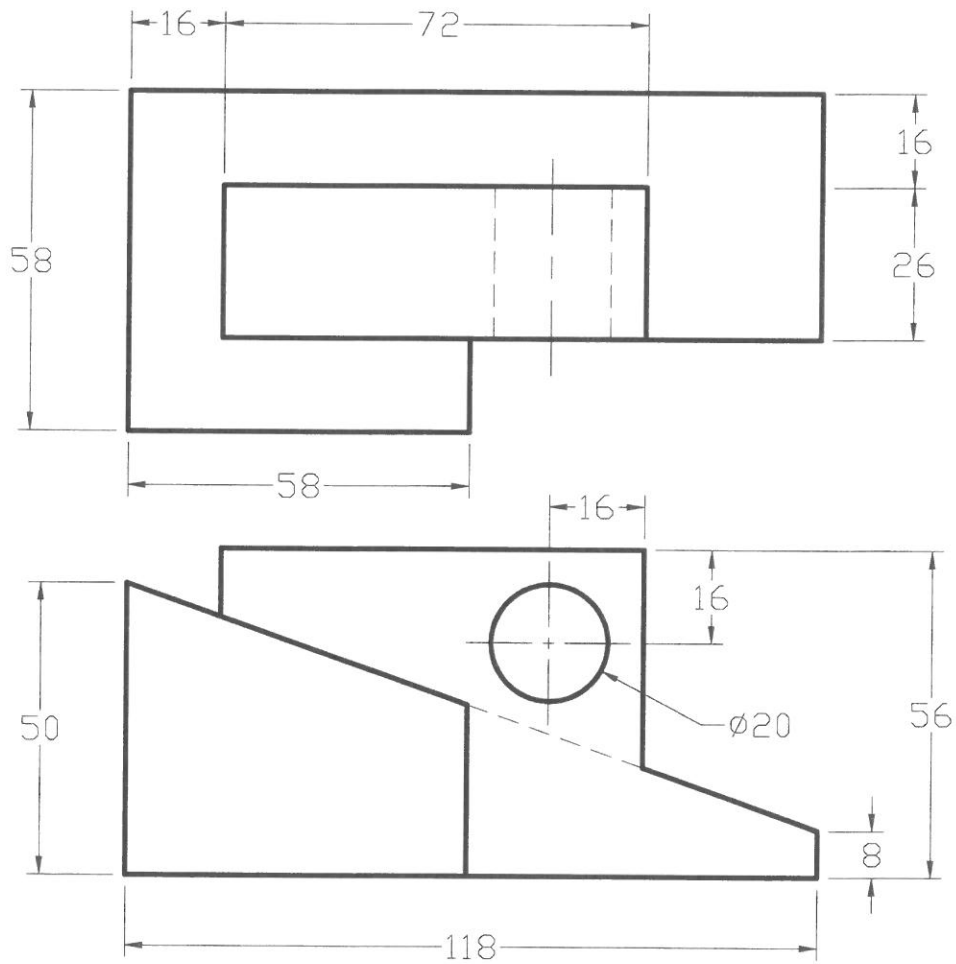


Figure Q2

Question 3

Figure Q3 is presented in first angle projection. Draw the following views in first angle projection:-

- a) Sectional view AA (13 marks)
- b) Sectional view BB (12 marks)

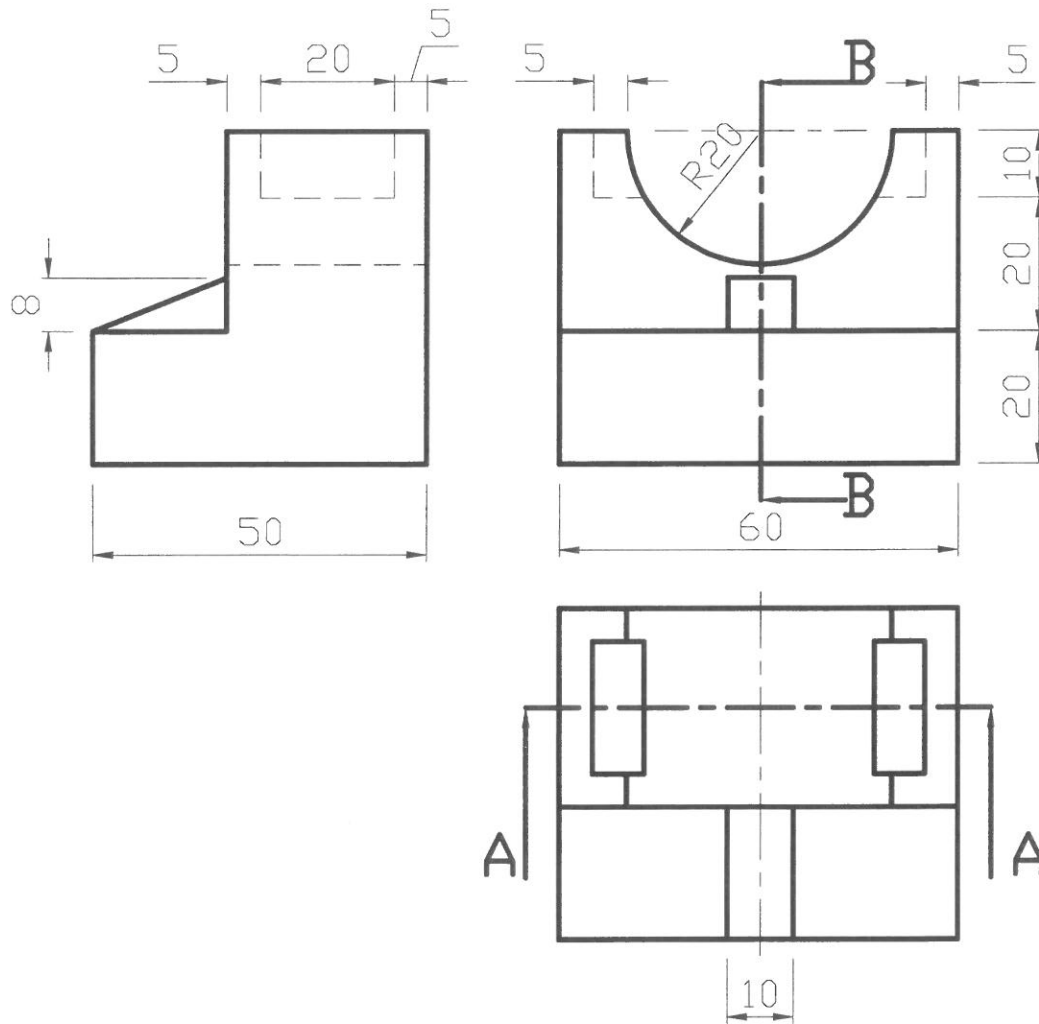


Figure Q3

Question 5

A truncated hexagon given in Figure Q5. The views shown below are in third angle projection.

(i) Redraw the front view and plan view. (5 marks)

(ii) Draw a full size (1:1) development of this object. (20 marks)

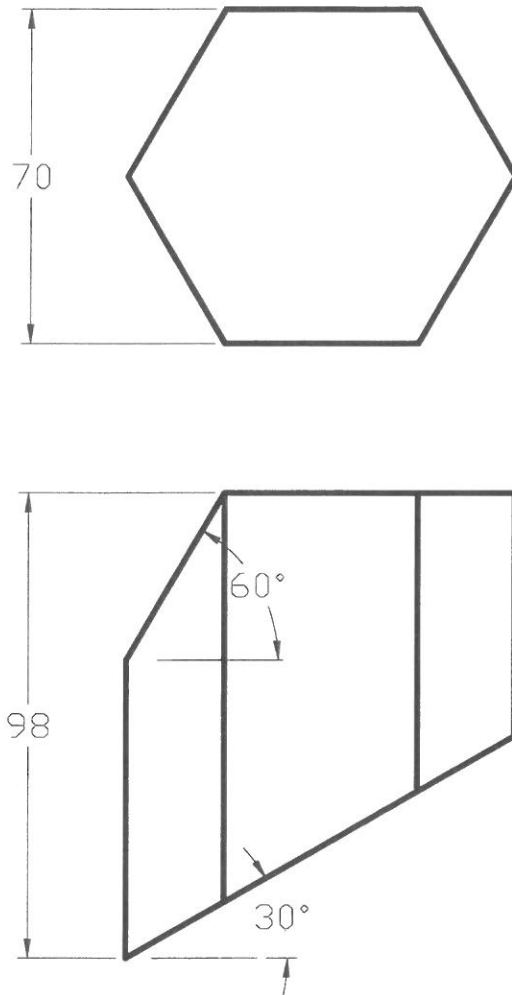


Figure Q5

Question 6

Draw the isometric view of the component given in Figure Q6 with the corner shown by the letter A in the foreground. The object has been drawn using First Angle Projection.

(25 marks)

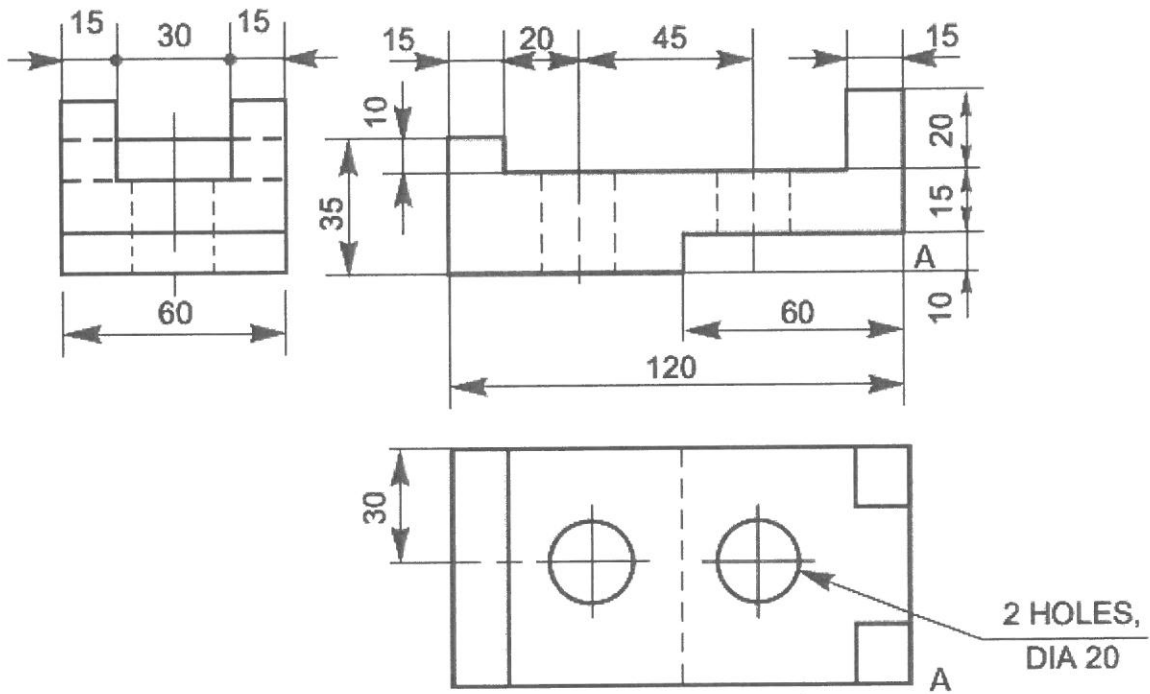


Figure Q6

-The End-

