

INTI

INTERNATIONAL COLLEGE PENANG (507232-U)
LAUREATE INTERNATIONAL UNIVERSITIES

FINAL
Examination Paper

(COVER PAGE)

INTI LIBRARY
INTI INTERNATIONAL COLLEGE PENANG

Session : August 2012

Programme : Diploma in Electrical and Electronic Engineering Programme

Course : EGR1175 : ENGINEERING DRAWING

Date of Examination : 13 December 2012

Time : 11a.m. – 1p.m Reading Time : Nil

Duration : 2 Hours

Special Instructions :

This paper consists of **SIX (6)** questions. Answer any **FOUR (4)** questions in the answer booklet provided. All questions carry equal marks.

Materials permitted : Nil

Materials provided : Drawing Sheet

Examiner(s) : Phua Chin Lai

Moderator : Hemalatha Murugiah

This paper consists of 7 printed pages, including the cover page.

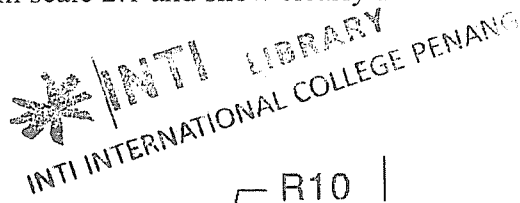
INTI INNTERNATIONAL COLLEGE PENANG

DIPLOMA IN ELECTRICAL AND ELECTRONIC ENGINEERING PROGRAMME (DEEI)
 EGR 1175 ENGINEERING DRAWING
 FINAL EXAMINATION: AUGUST 2012 SESSION

Instructions: This paper consists of Six (6) questions. Answer any FOUR (4) questions in the drawing sheet provided. All questions carry equal marks. All drawings are to be drawn in full size unless otherwise stated. All dimensions are not required unless the question explicitly asks for them.
 NOTE: All dimensions are given in mm.

Question 1

Draw the support brace from Figure Q1 in scale 2:1 and show clearly the construction for finding the center of the arcs.



(25 marks)

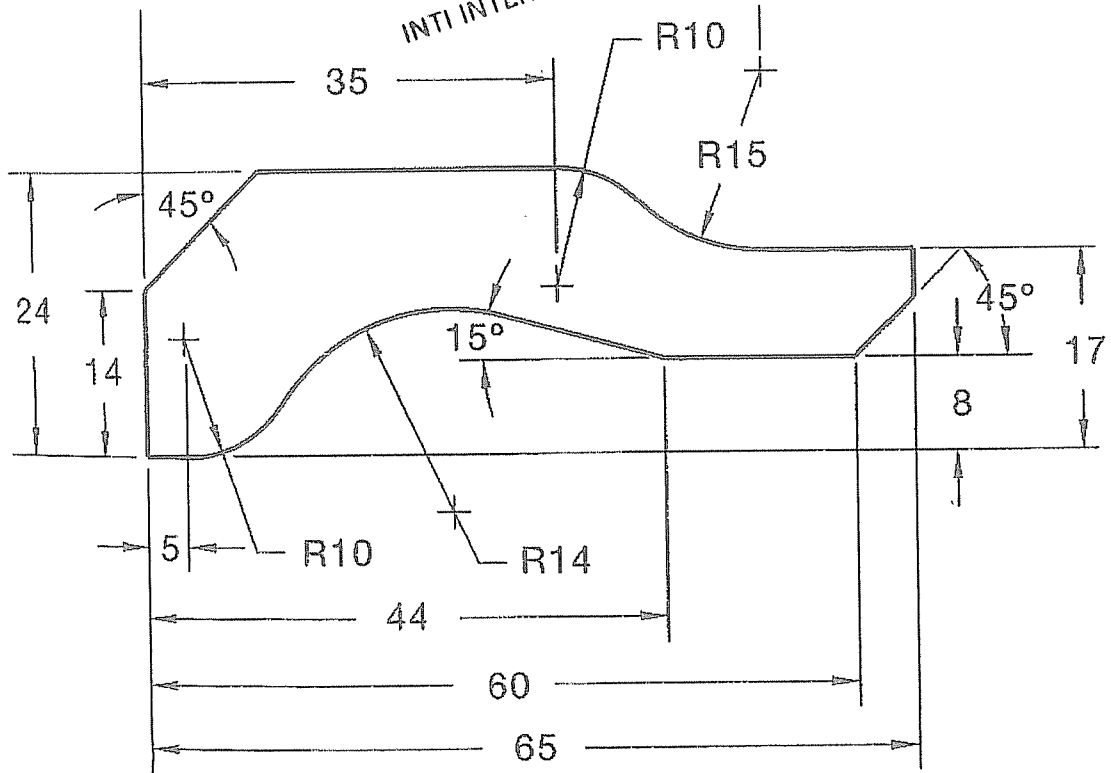


Figure Q1

Question 2

Figure Q2 below shows the front and left end view of a metal block in first angle projection. Draw the oblique cabinet view receding to right. Choose the most suitable face to be presented on the frontal plane. (25 marks)

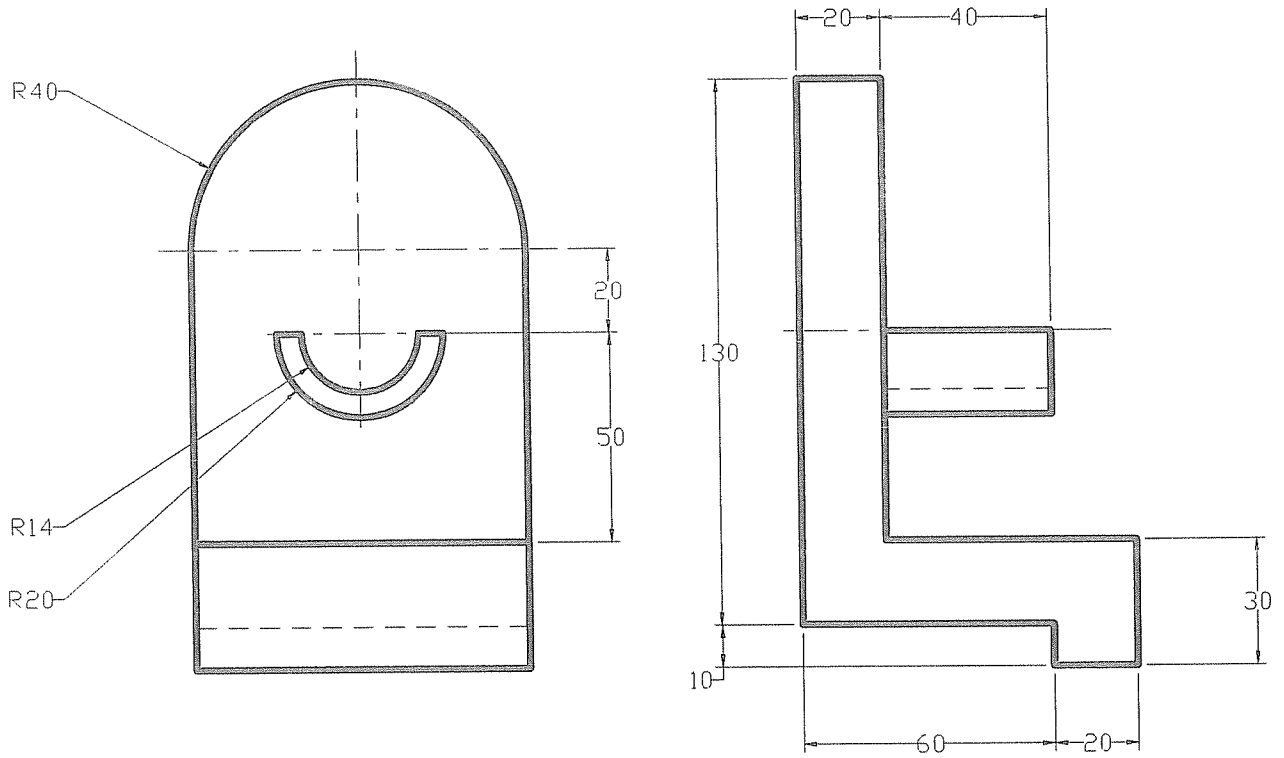


Figure Q2

 INTI LIBRARY
INTI INTERNATIONAL COLLEGE PENANG

Question 4

The Figure Q4 shows two truncated cones welded together. Draw the development of :

(a) Part A (10 marks)

(b) Part B (15 marks)

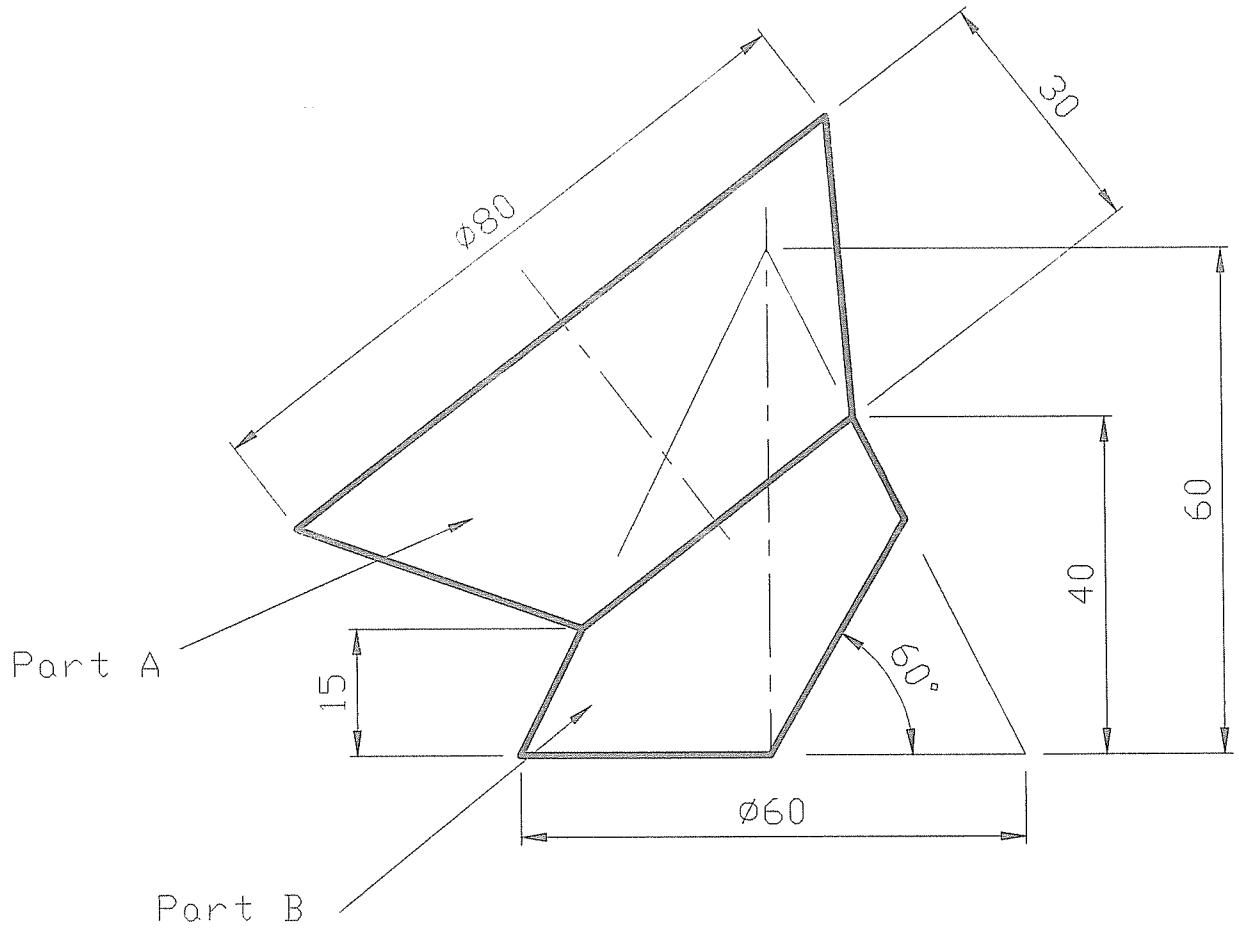


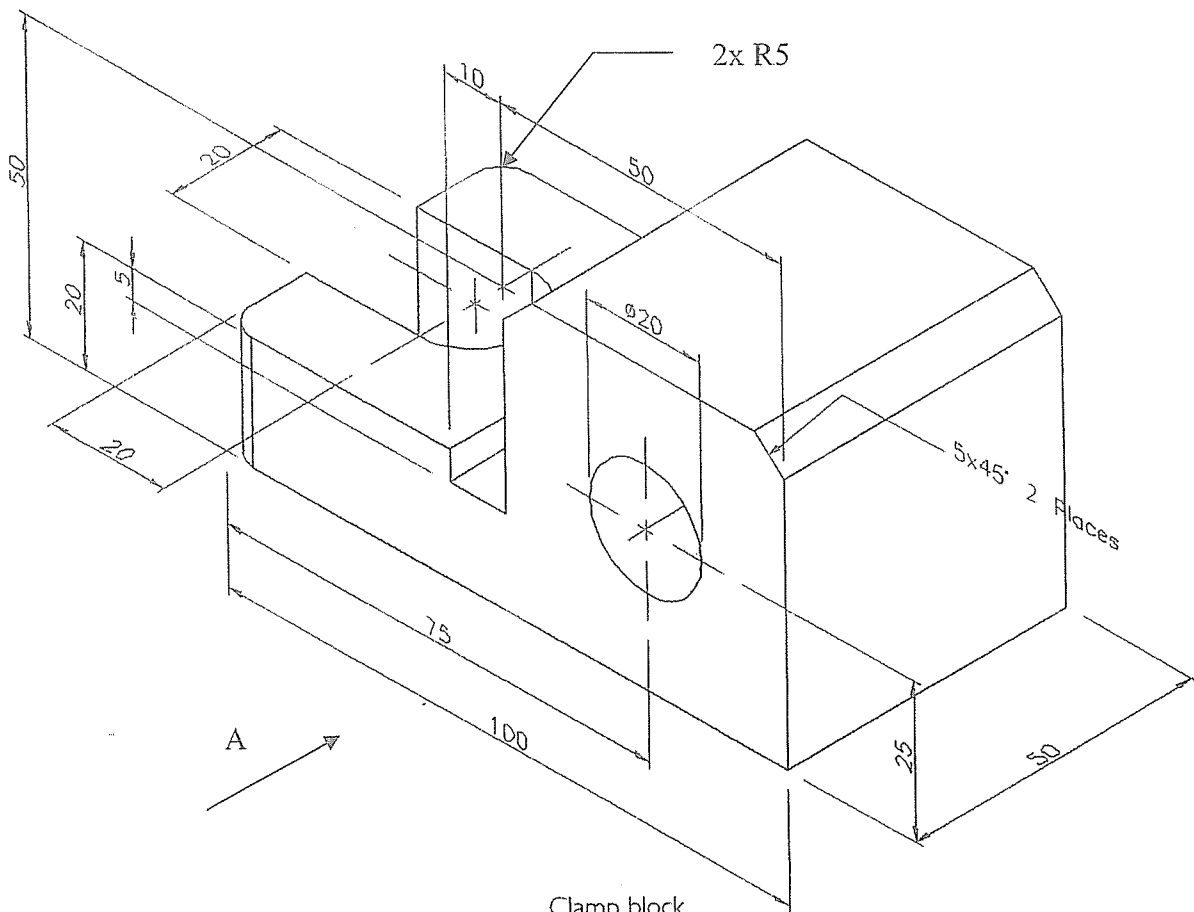
Figure Q4

INTI LIBRARY
INTI INTERNATIONAL COLLEGE PENANG

Question 5

Figure Q5 shows a clamp block with features. Draw the front, top and right end view in 3rd angle projection. A front view is viewed from the direction of arrow A.

(25 marks)



Clamp block
Figure Q5

INTI LIBRARY
INTERNATIONAL COLLEGE OF ENGINEERING

Question 6

Draw the following views in 3rd Angle Projection:

(a) the front view as given

(2 marks)

(b) a side view from B

(15 marks)

(c) a sectional A-A on top view

(8 marks)

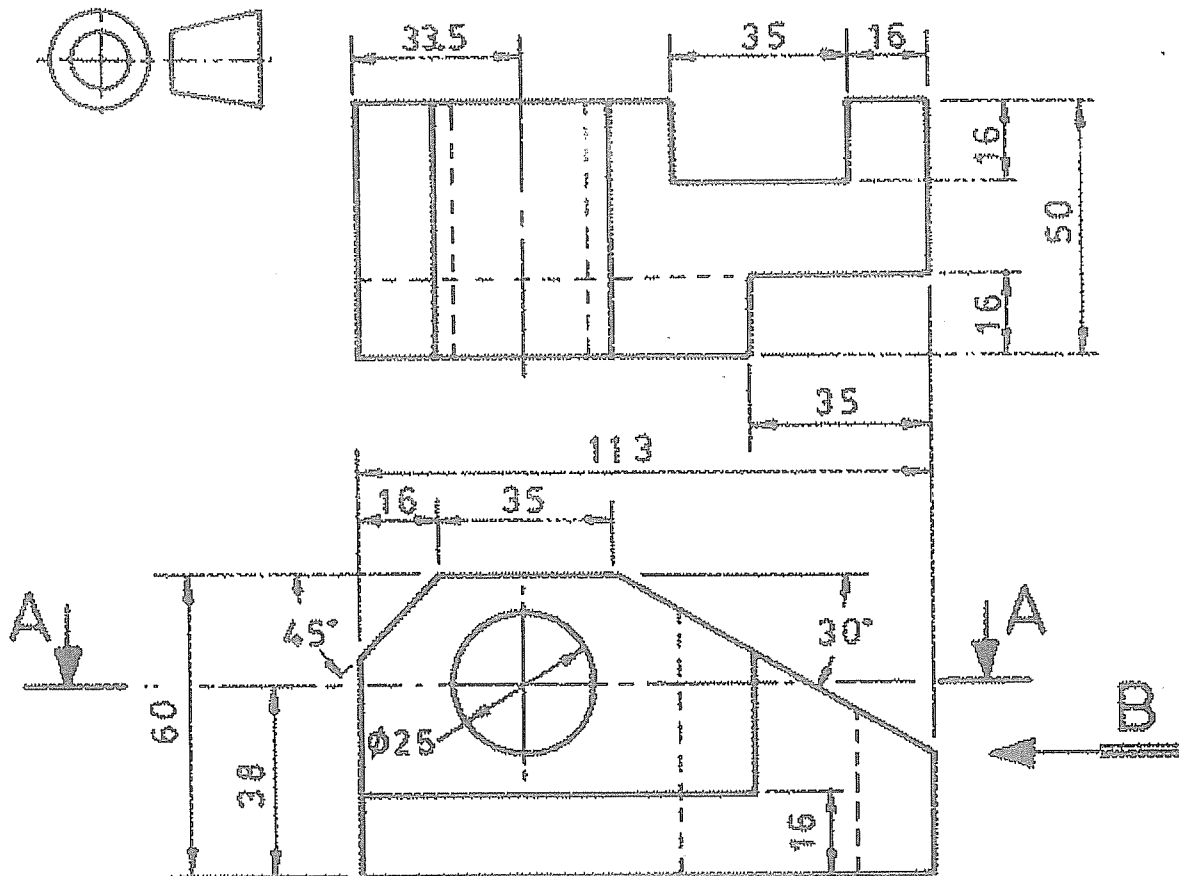


Figure Q6

--THE END--

EGR 1175 Aug 2012/CL PHUA

UNIVERSITY OF
SOUTH ALABAMA
LIBRARY
INTERNATIONAL COLLEGE OF
PE