

FINAL
Examination Paper
(COVER PAGE)

Session : April 2017

Programme : Diploma In Electrical And Electronic Engineering (DEEI)

Course : EGR1185 : Engineering Drawing

Date of Examination : August 1, 2017 (Tuesday)

Time : 11:00 am – 1:00 pm Reading Time : Nil

Duration : 2 Hours

Special Instructions :

This paper consists of **SIX (6)** questions. Answer any **FOUR (4)** questions in the answer booklet provided. All questions carry equal marks.

Materials permitted : Drawing Instruments and Calculator

Material provided : A2 Sized Drawing Paper

Examiner : Ms Phua Chin Lai, Mr Manickampraslad M.Sambasivam,

Moderator : Mr Teh Thiam Oun

DIPLOMA IN ELECTRICAL AND ELECTRONIC ENGINEERING PROGRAMME (DEEI)
EGR1185: ENGINEERING DRAWING
FINAL EXAMINATION: APRIL 2017 SESSION

Instructions: This paper consists of **SIX (6)** questions. Answer any **FOUR (4)** questions in the drawing paper provided. All questions carry equal marks. All drawings are to be drawn in full size unless otherwise stated. All dimensions are not required unless the question explicitly asks for them.

NOTE: All dimensions are given in mm.

Question 1

Draw the following view of object shown in Figure Q1 in Third Angle Projection.

- (a) front view from X (7 marks)
- (b) a right side view (11 marks)
- (c) a plan view (7 marks)

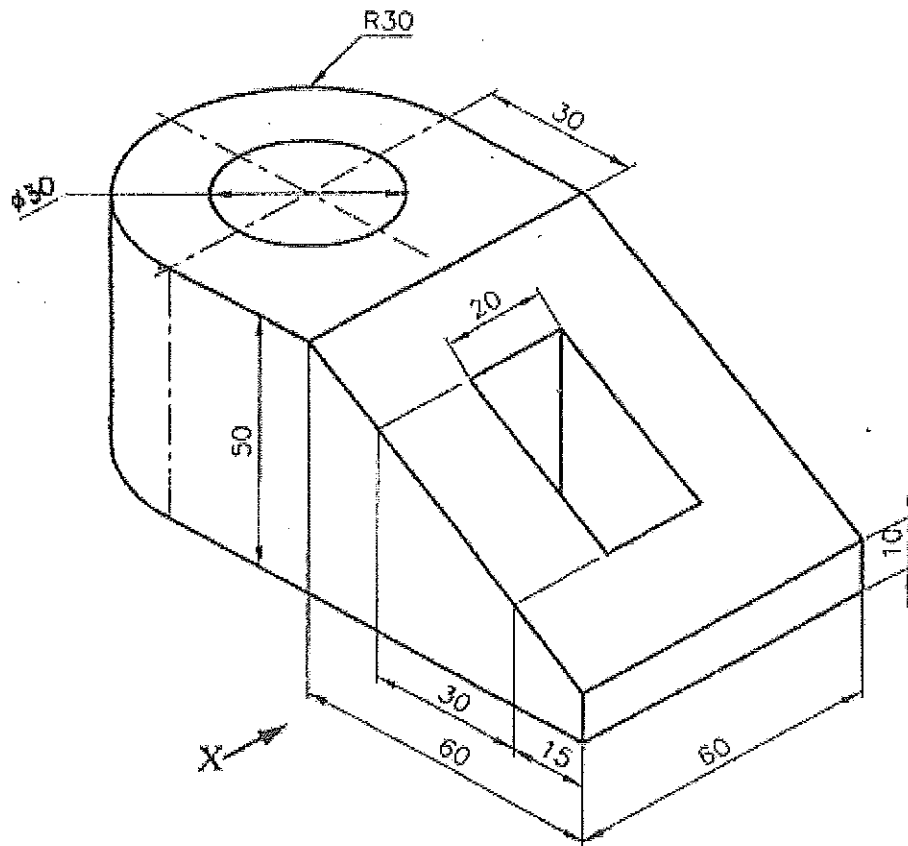


Figure Q1

Question 2

The front and plan views of the component in 1st angle projection are shown in Figure Q2 below.
 Draw the given front view & sectional plan view in 1st angle projection.

(25 marks)

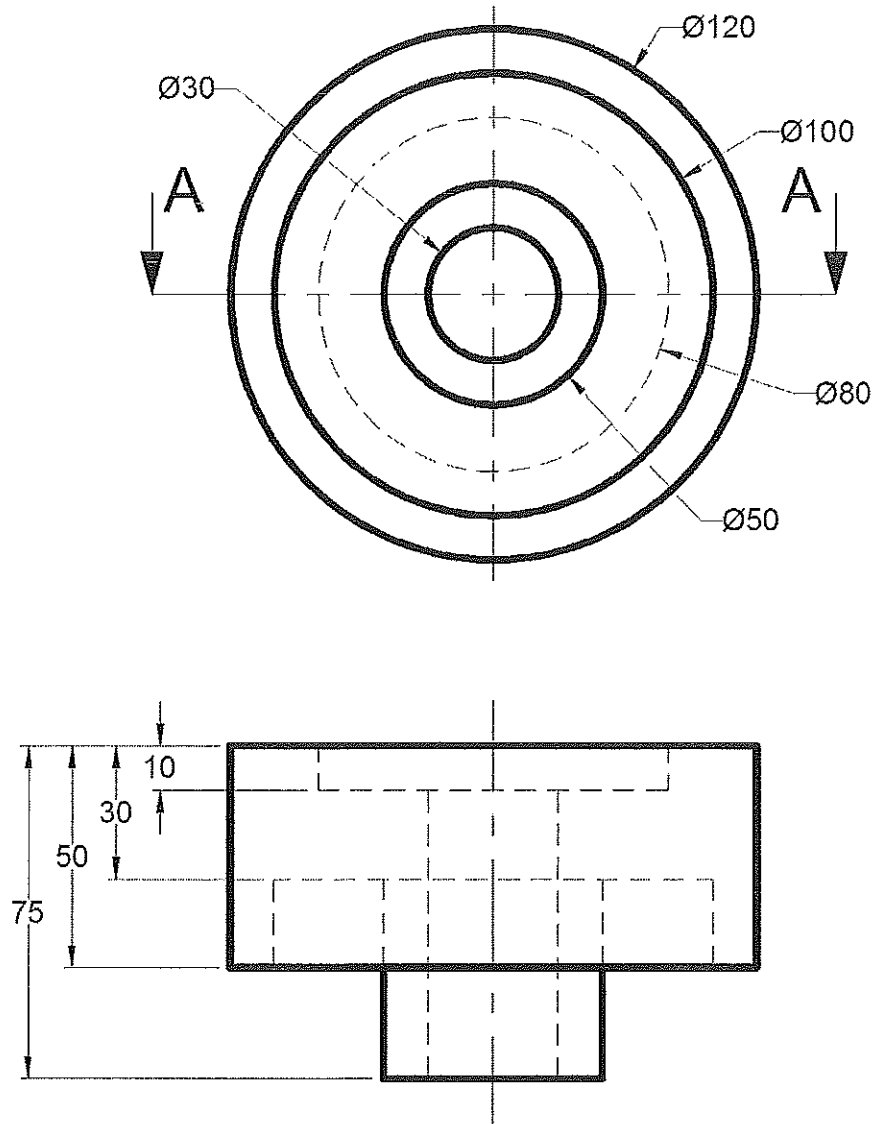


Figure Q2

Question 3

Draw the isometric view of the component given in Figure Q3 with the corner shown by letter A in the foreground. The object has been drawn in accordance with the 3rd angle projection.

(25 marks)

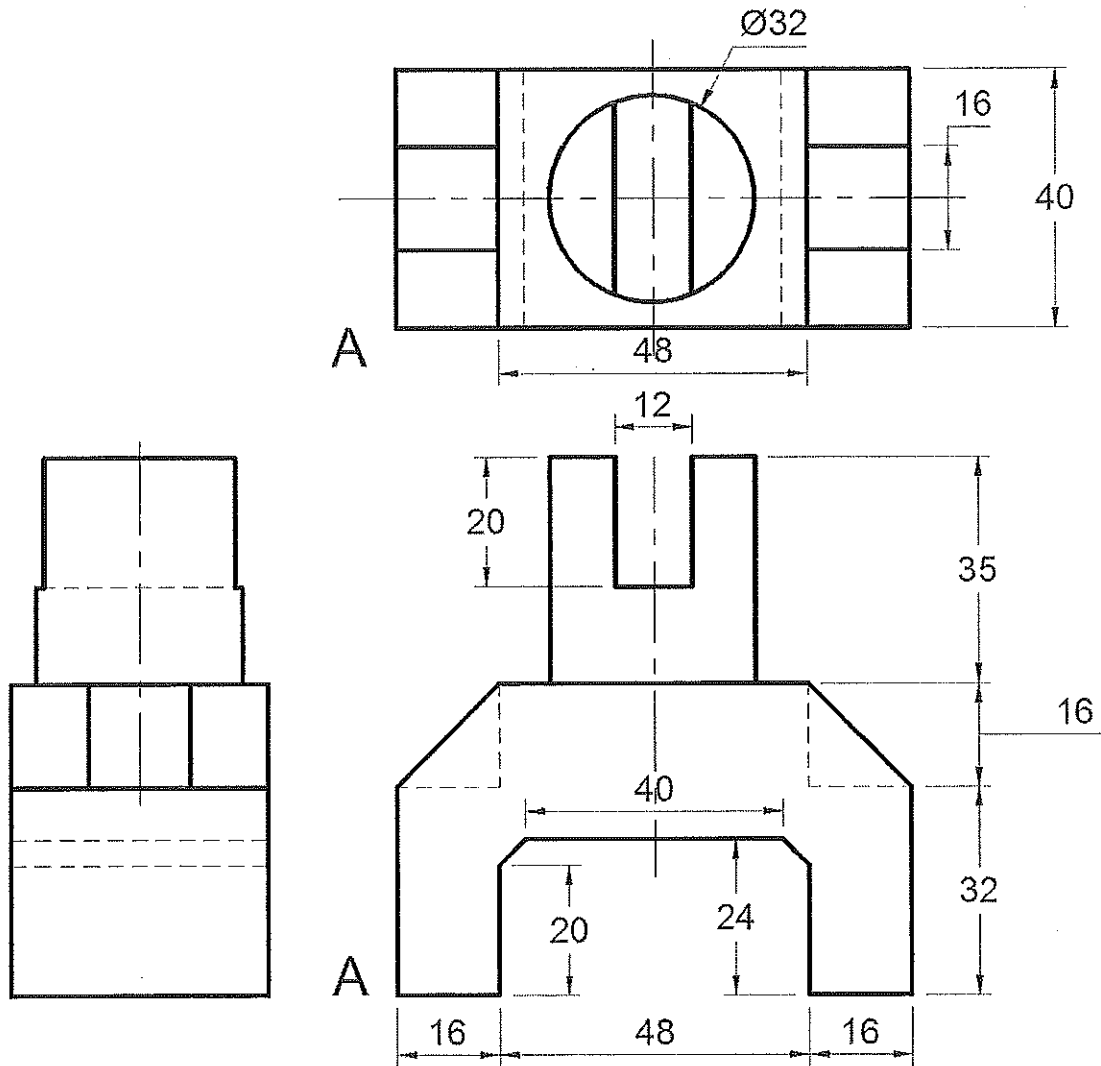


Figure Q3

Question 4

Using principles of tangency, draw Figure Q4, making sure that the construction to obtain the centers of the arcs and circles are properly indicated.

(25 marks)

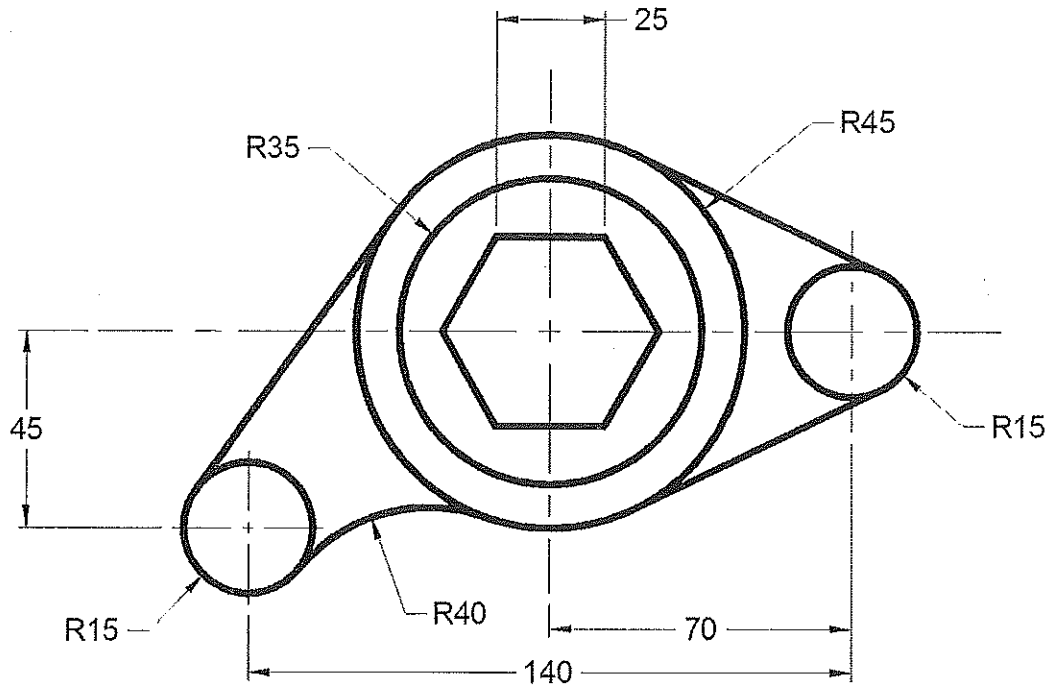


Figure Q4

Question 6

The front and plan views of a thin plate are shown in Figure Q6 below in First angle projection. Determine the true shape of triangular portion BCD.

(25 marks)

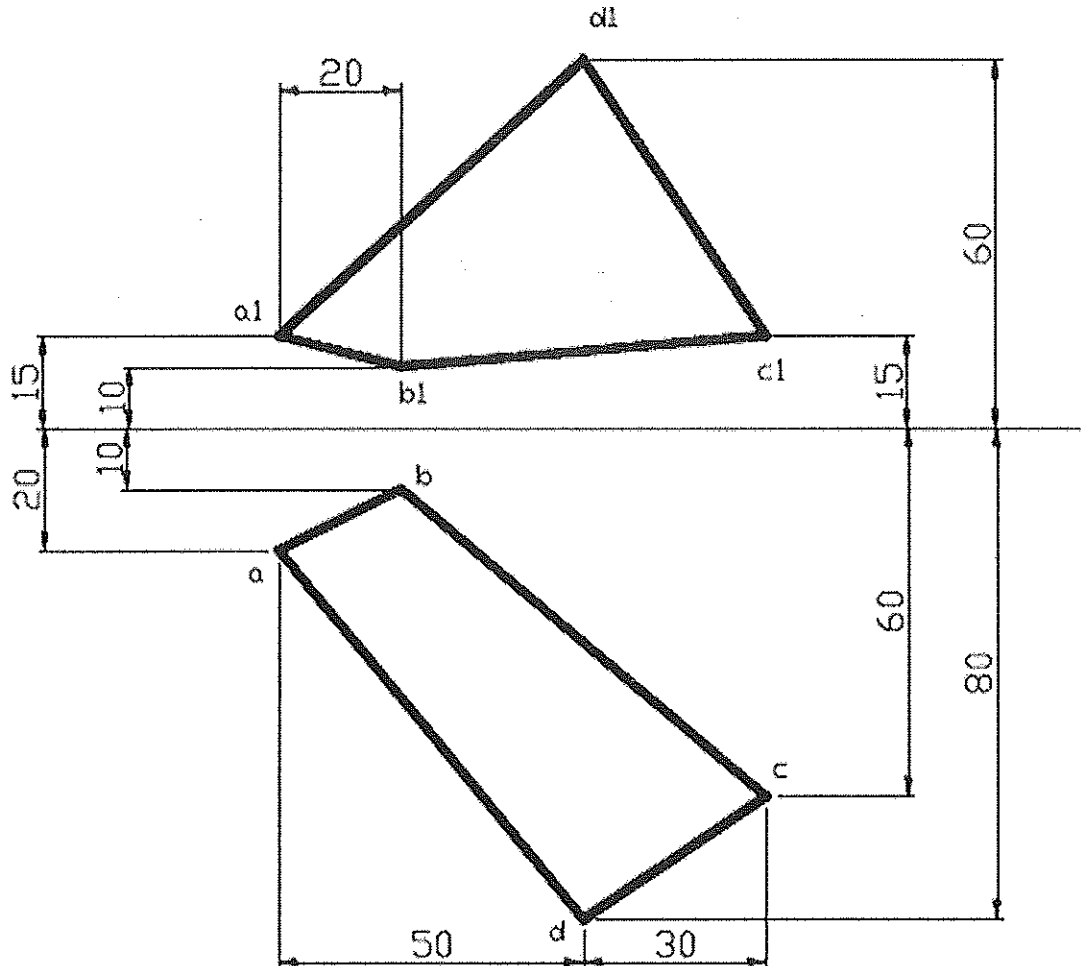


Figure Q6

-THE END-

EGR1175 (F)/Apr2017/reformatted

